

NOTES:

Preparation Preambles:
- All surfaces to be prepared in accordance with the specifications of the manufacturer and approved by the architect and engineer.
- All surfaces to be prepared in accordance with the specifications of the manufacturer and approved by the architect and engineer.

Paint Specifications:

Paint Specifications:
- All exterior doors (including apartment front and rear doors), unless specified otherwise to have dark grey frame (Colour E) on both sides.
- All internal doors to be painted light grey (Colour F) on both sides.

Table with 3 columns: Rev#, Date, Description of change, By. Contains revision history for the drawing.

Table with 3 columns: Rev#, Date, Description of change, By. Contains revision history for the drawing.

Client:
DRAFT COPY OF THE MASTER PLAN AT CONSULTANT COMPANY WATER BEANS THE CONSULTANT COMPANY

Consultant:
i k p o
architect and urban designers

APPROVED:
THE MASTER PLAN AT CONSULTANT COMPANY WATER BEANS THE CONSULTANT COMPANY

Project Description:
DISTRICT 6
PHASE 3
SITE Q
RESTITUTION HOUSING

Drawing Title:
APARTMENT_BLOCK_03
TYPICAL_EXTERIOR_WALL_FINISH

Drawing Date:
2020-02-24
Scale:
1:100
Designed By:
DS
Checked By:
DS
Drawn By:
LJA
Approved By:
gp

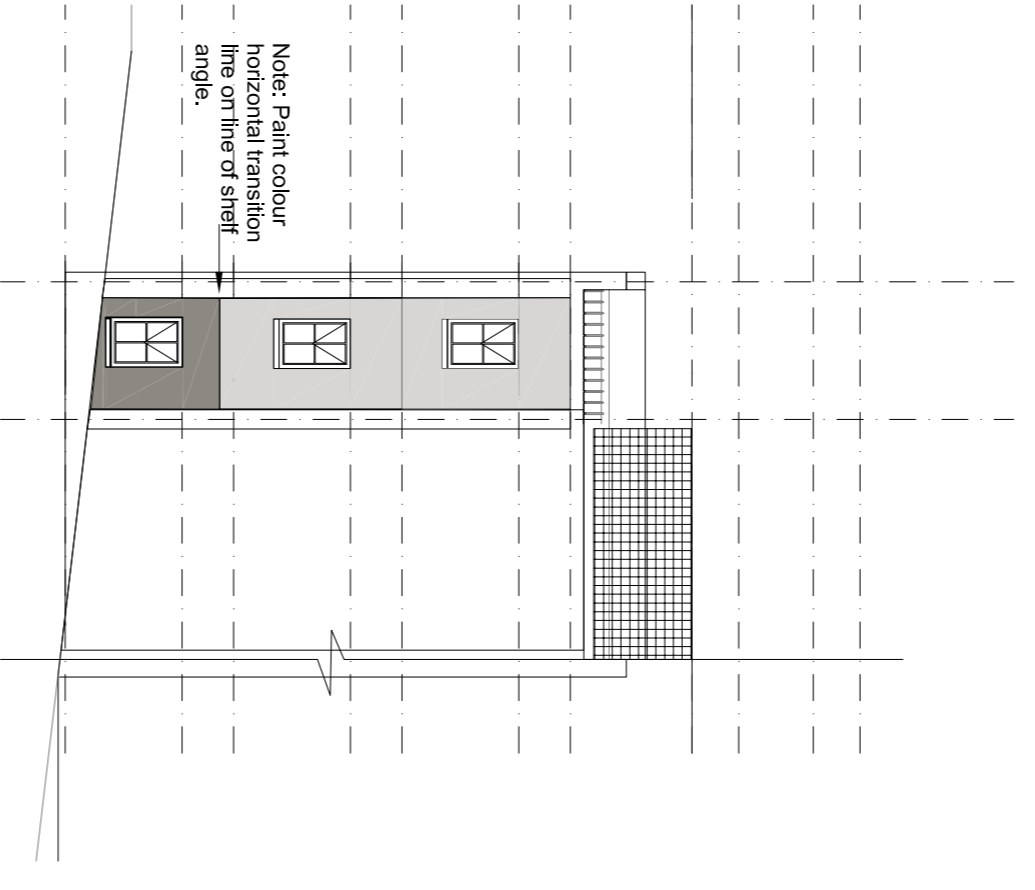
This drawing supersedes all previous external wall finish drawings for this block and, specifically:
DP3_2_ARC_CN_Q1_200
D6P3_2_ARC_CN_TA_803_rev0.

Drawing D6P3_2_ARC_CN_Q03_201 to be read together with drawing D6P3_2_ARC_CN_Q03_202.

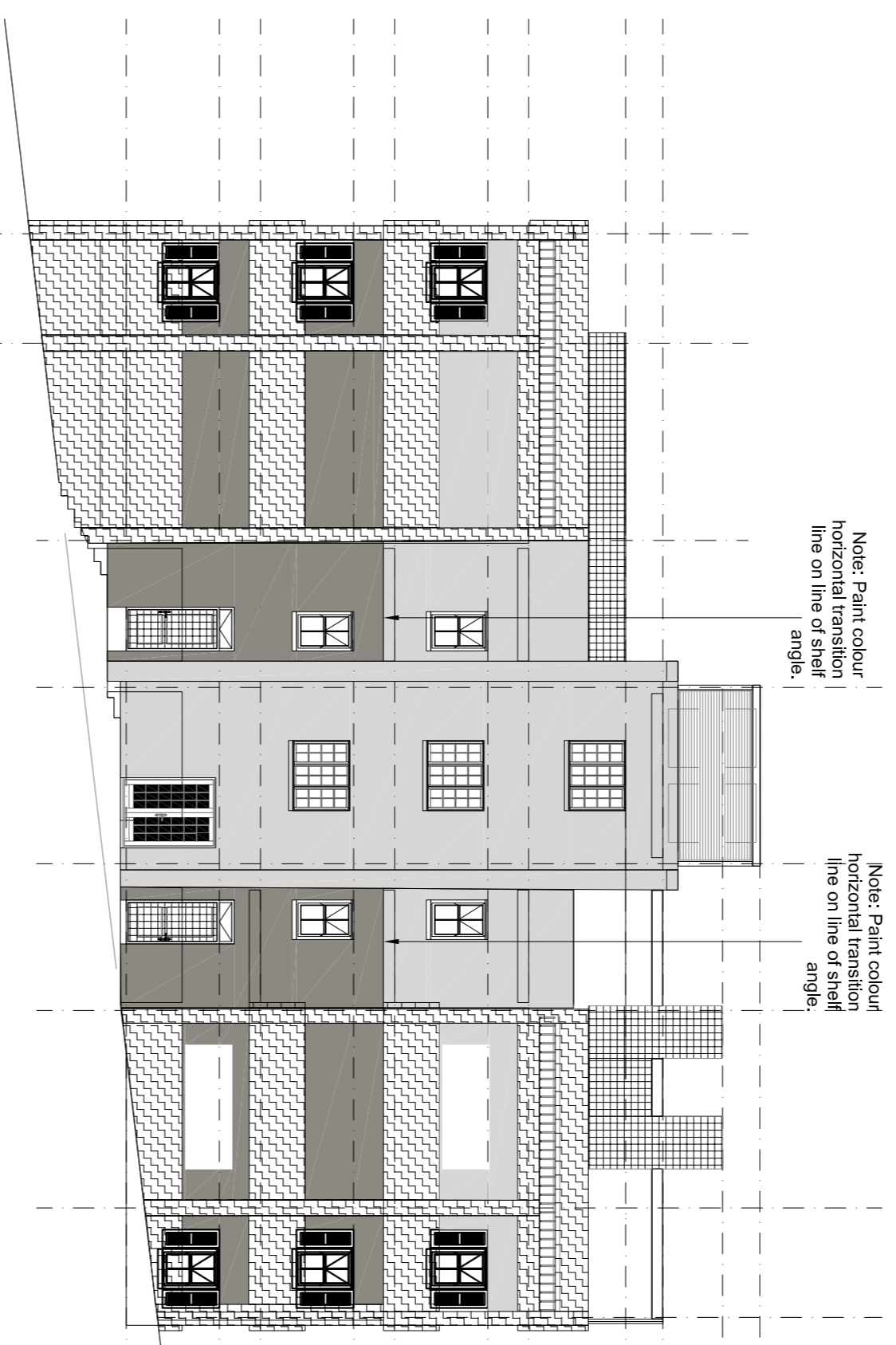
Legend:
- Colour A (Green)
- Colour B (Orange)
- Colour C (Yellow)
- Colour D (Pink)
- Colour E (Dark Grey)
- Colour F (Light Grey)
- Colour G (White)

For ground lines refer to Landscape Architect documentation.

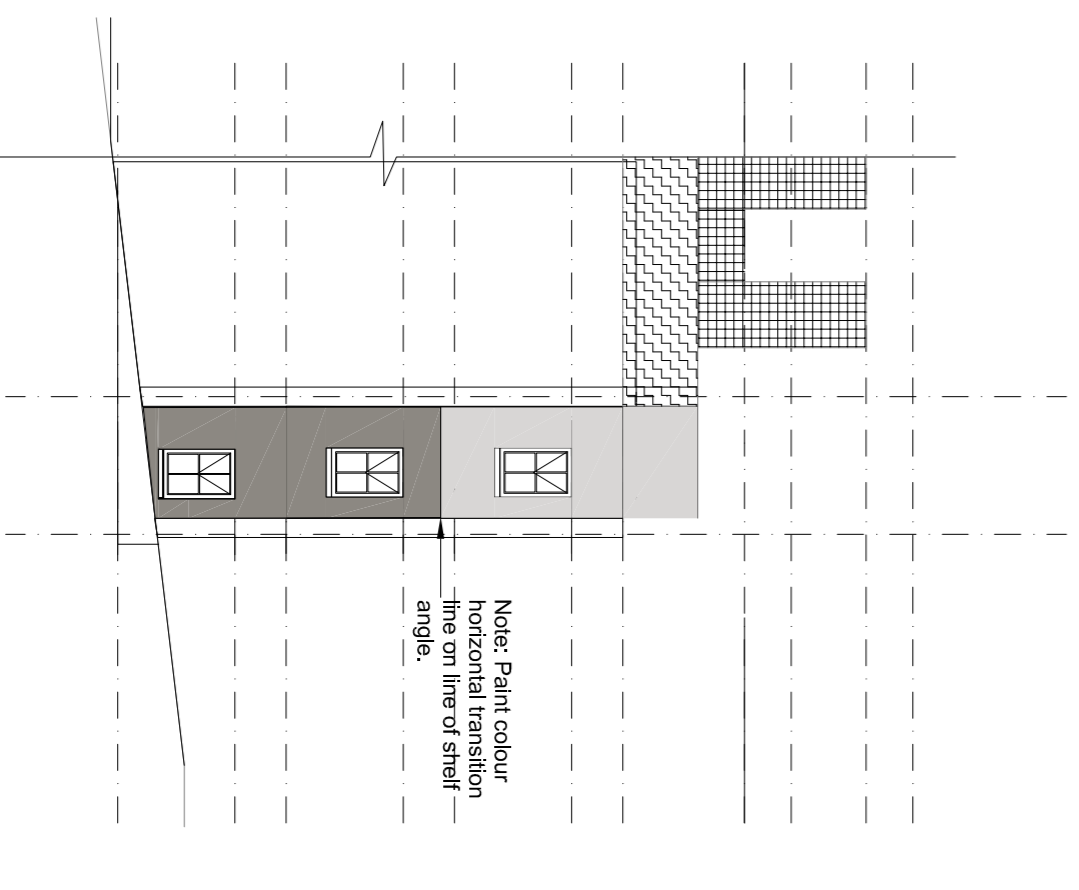
Door paint colours:
- All doors, unless specified otherwise to have dark grey frame (Colour E) on both sides.
- All internal doors to be painted light grey (Colour F) on both sides.
- All external doors (including apartment front and rear doors), unless specified otherwise to be painted with yellow (Colour C) for this block Q1 and Q3 on exterior side and light grey (Colour F) on the inside. All door leaf edges, tops and bottoms to be painted with hinge side colour.



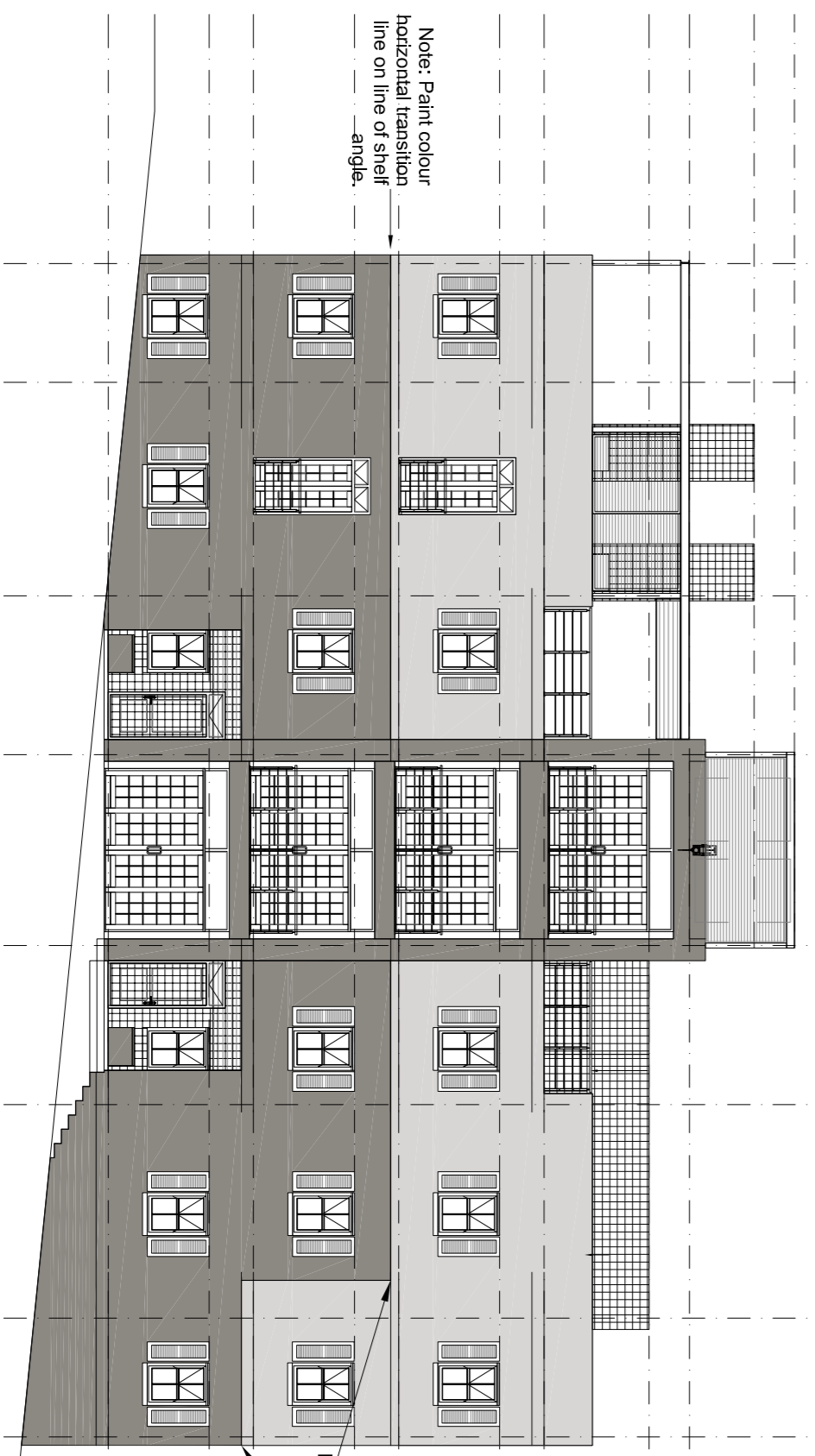
CROSS SECTIONAL ELEVATION E-E
Scale 1:100



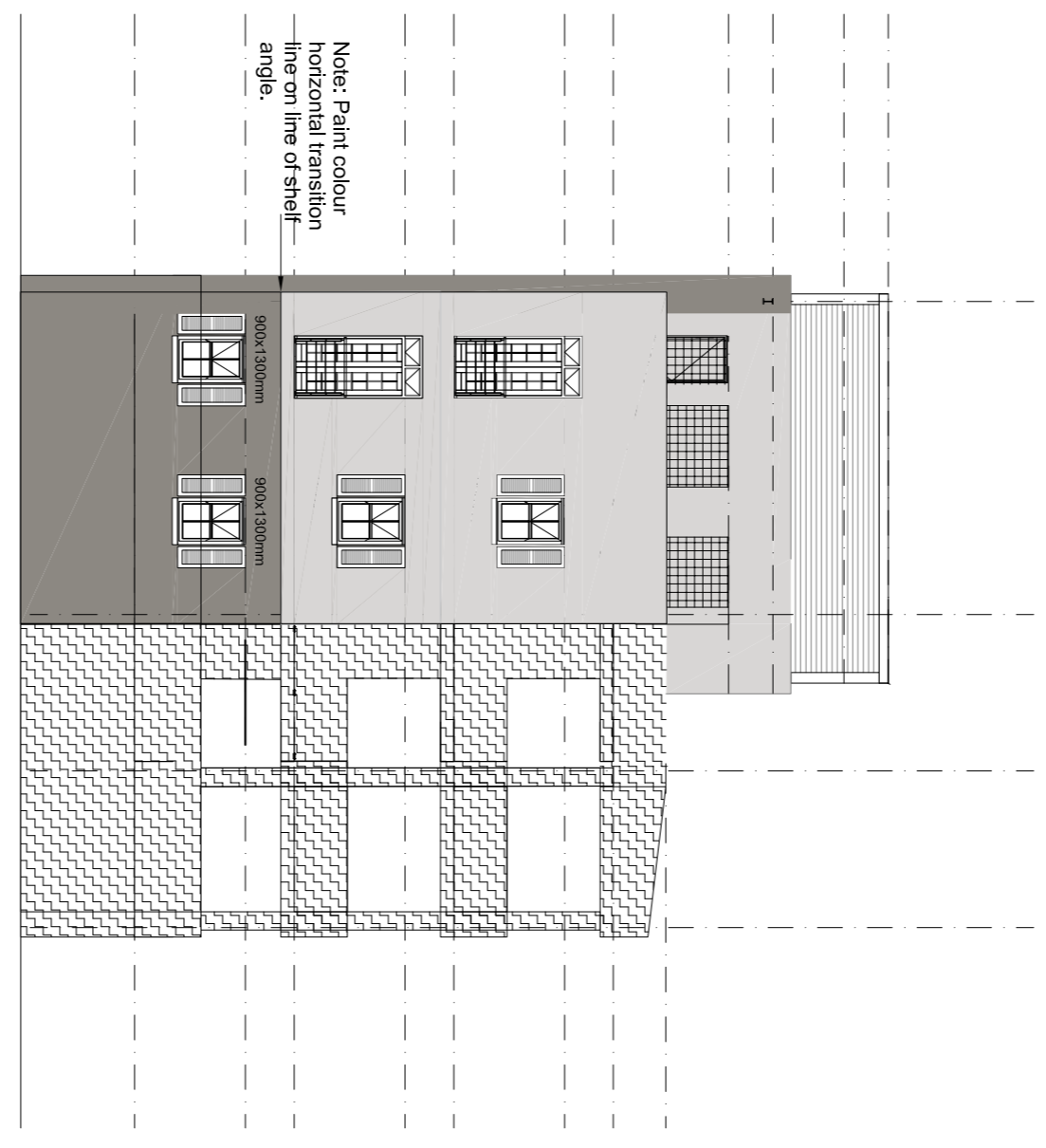
WEST STREET ELEVATION
Scale 1:100



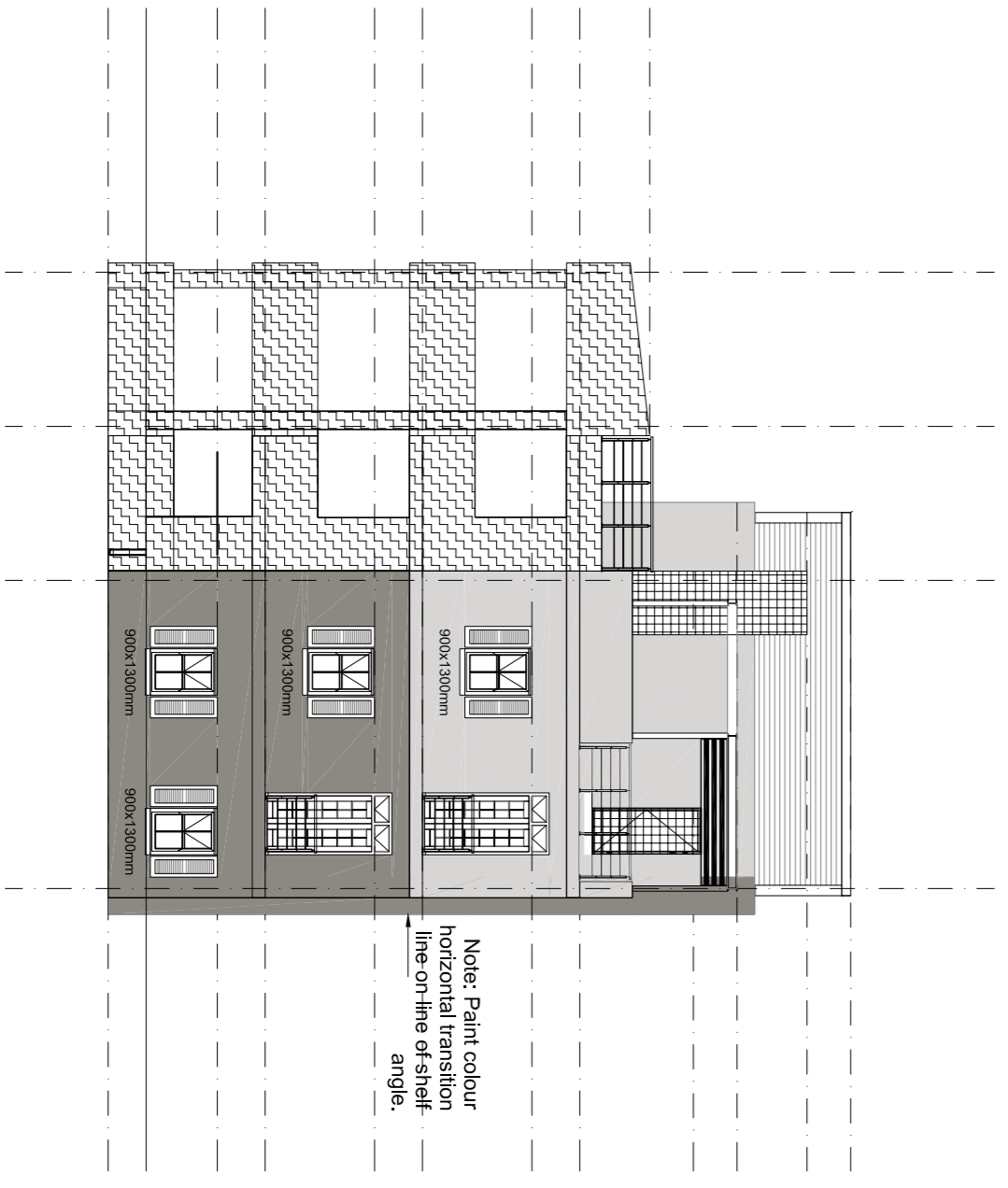
CROSS SECTIONAL ELEVATION E1-E1
Scale 1:100



EAST ELEVATION
Scale 1:100



NORTH STREET ELEVATION
Scale 1:100



SOUTH ELEVATION
Scale 1:100