

COLOR CHARTS PRESCRIBED FOR EXPORT PUMPKINS

Important note:

The below color charts should be read in conjunction with the export standards and requirements prescribed for fresh vegetables under the banner of the Agricultural Product Standards Act 119 of 1990.

Blemishes

Set P.1



| Pumpkins | Class I | Class II | Out of Grade | Notes |
|-----------|---------|----------|--------------|---|
| Blemishes | √ | √ | x | Class 1 and class 2-be free from blemishes. Class 1 may show slight skin defects, class 2 may show skin defects. Class 1: 10% of the total surface area allowed for blemishes. Class 2: 20% of the total surface area allowed for blemishes - not elevated. |

Blemishes



| Pumpkins | Class I | Class II | Out of Grade | Notes |
|-----------|---------|----------|--------------|---|
| Blemishes | √ | √ | x | Class 1 and class 2 – be free from blemishes. Class 1 may show slight skin defects, class 2 may show skin defects. Class 1: 10% of the total surface area allowed for blemishes. Class 2: 20% of the total surface area allowed for blemishes - not elevated. |

Blemishes

Set P.3



| Pumpkins | Class I | Class II | Out of Grade | Notes |
|-----------------|----------------|-----------------|---------------------|---|
| Blemishes | √ | √ | x | Class 1 and class 2 – be free from blemishes. Class 1 may show slight skin defects, class 2 may show skin defects. Class 1: 10% of the total surface area allowed for blemishes. Class 2: 20% of the total surface area allowed for blemishes - not elevated. |

Blemishes and lay marks

Set P.4



| Pumpkins | Class I | Class II | Out of Grade | Notes |
|-------------------------|---------|----------|--------------|--|
| Blemishes and lay marks | x | √ | x | Class 1 and class 2 – be free from blemishes- be sound and attractive in appearance and have normal characteristics of the cultivar. Intensity and size not acceptable for both class 1 and class 2. |

Elevated blemishes



| Pumpkins | Class I | Class II | Out of Grade | Notes |
|--------------------|----------------|-----------------|---------------------|--|
| Elevated blemishes | x | x | √ | Class 1 and class 2 – be free from elevated blemishes. Tolerance should be applied. |

Elevated blemishes



| Pumpkins | Class I | Class II | Out of Grade | Notes |
|--------------------|---------|----------|--------------|--|
| Elevated blemishes | x | x | √ | Class 1 and class 2 – be free from elevated blemishes. Tolerance should be applied. |

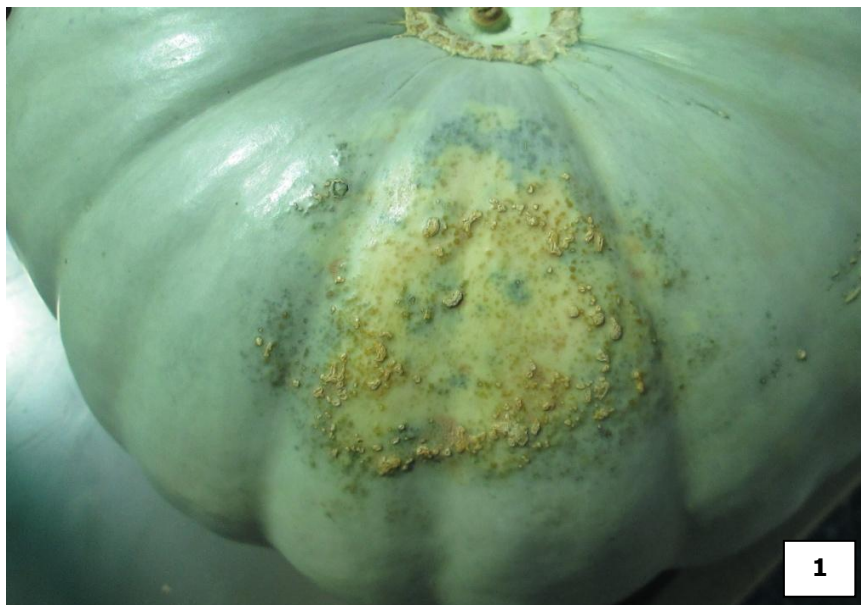
Laymarks

Set P.7



| Pumpkins | Class I | Class II | Out of Grade | Notes |
|-----------------|----------------|-----------------|---------------------|---|
| Laymarks | x | √ | x | Class 1 and class 2 - be free from blemishes. Lay marks not allowed for class 1 if more than 10 % of total surface area is covered. Allowed for class 2 if lay marks covers less than 20% of total surface area and is not dark. |

Lay marks



| Pumpkins | Class I | Class II | Out of Grade | Notes |
|-----------------------------------|----------------|-----------------|---------------------|--|
| Lay marks plus elevated blemishes | Photo 2 | Photo 1 | x | Blemish/wart of 25 cm ² (5cm x 5cm) is allowed for class 1 and 50 cm ² (7cm x 7 cm) allowed for class 2. |

Laymarks



| Pumpkins | Class I | Class II | Out of Grade | Notes |
|-------------------------|----------------|-----------------|---------------------|--|
| Laymarks with blemishes | x | √ | x | Class 1 and class 2 – be sound and attractive in appearance and have normal characteristics of the cultivar. Intensity and size not acceptable for class 1 but acceptable for class 2. |

Laymarks



| Pumpkins | Class I | Class II | Out of Grade | Notes |
|-----------------|----------------|-----------------|---------------------|---|
| Light laymark | x | √ | x | Class 1 and class 2 – be sound and attractive in appearance and have normal characteristics of the cultivar. Intensity and size acceptable for class 2. |

Warts

Set P.11



| Pumpkins | Class I | Class II | Out of Grade | Notes |
|----------|---------|----------|--------------|--|
| Warts | x | x | √ | Class 1 and class 2 - be free from blemishes - warts/elevated blemishes not allowed for class 1 and class 2. |

Warts

Set P.12



| Pumpkins | Class I | Class II | Out of Grade | Notes |
|----------|---------|----------|--------------|---|
| Warts | x | x | √ | Class 1and class 2-befree from blemishes - warts/elevated blemishes not allowed for |

| | | | | |
|--|--|--|--|----------------------|
| | | | | class 1 and class 2. |
|--|--|--|--|----------------------|

Warts

Set P.13



| Pumpkins | Class I | Class II | Out of Grade | Notes |
|----------|---------|----------|--------------|--|
| Warts | x | x | √ | Class 1 and class 2 - befree from blemishes. Warts/elevated blemishes not allowed for class 1 and class 2. |

Injuries



| Pumpkins | Class I | Class II | Out of Grade | Notes |
|----------------------|----------------|-----------------|---------------------|--|
| Torn out stem/injury | x | x | √ | Class 1. Not allowed. Apply tolerance only. Class 2. Not allowed. Apply |

| | | | | |
|--|--|--|--|-----------------|
| | | | | tolerance only. |
|--|--|--|--|-----------------|

Injuries

| |
|-----------------|
| Set P.15 |
|-----------------|



| Pumpkins | Class I | Class II | Out of Grade | Notes |
|----------|---------|----------|--------------|--|
| Injuries | x | x | √ | Class 1. Not allowed. Apply tolerance only. Class 2. Not allowed. Apply tolerance only. |

Injuries

Set P.16



| Pumpkins | Class I | Class II | Out of Grade | Notes |
|----------|---------|----------|--------------|--|
| Injuries | x | x | √ | Class 1. Not allowed. Apply tolerance only. Class 2. Not allowed. Apply tolerance only. |

Foreign matter



| Pumpkins | Class I | Class II | Out of Grade | Notes |
|-----------------|----------------|-----------------|---------------------|--|
| Foreign matter | x | x | √ | Class 1 and class 2 – be clean and free from foreign matter, including soil. Apply individual tolerances for each class. |

Sunburn

Set P.18



| Pumpkins | Class I | Class II | Out of Grade | Notes |
|----------|---------|----------|--------------|--|
| Sunburn | x | x | √ | Class 1 and class 2 - be free from sun-scorch. Sunburn: second burn with brownish colour is not acceptable. Sunburn may not prominently deviate from the background colour and affect the general appearance of the pumpkin. |

Sunburn

Set P.19



| Pumpkins | Class I | Class II | Out of Grade | Notes |
|-------------------|---------|----------|--------------|--|
| Secondary sunburn | x | x | √ | <p>Class 1 and class 2-be free from sun-scorch.</p> <p>Sunburn: second burn with white, yellow or brownish colour is not acceptable. Sunburn may not prominently deviate from the background colour and affect the general appearance of the pumpkin.</p> |

Sunburn

Set P.20



| Pumpkins | Class I | Class II | Out of Grade | Notes |
|-------------------|---------|----------|--------------|---|
| Secondary sunburn | x | x | √ | Class 1 and class 2 - be free from sun-scorch. Black mould-decay starting to develop. Apply decay tolerance. |

Stem



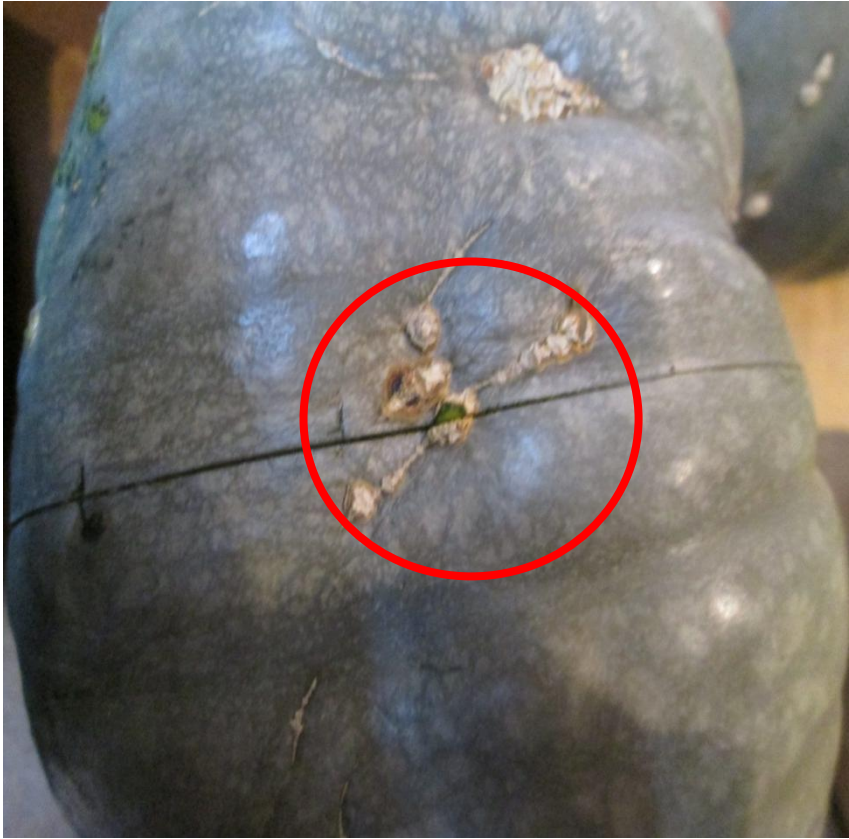
| Pumpkins | Class I | Class II | Out of Grade | Notes |
|-----------------|----------------|-----------------|---------------------|---|
| Stem | √ | √ | x | Class 1 and class 2 - no prescription on length or absence. |

Mould Growth



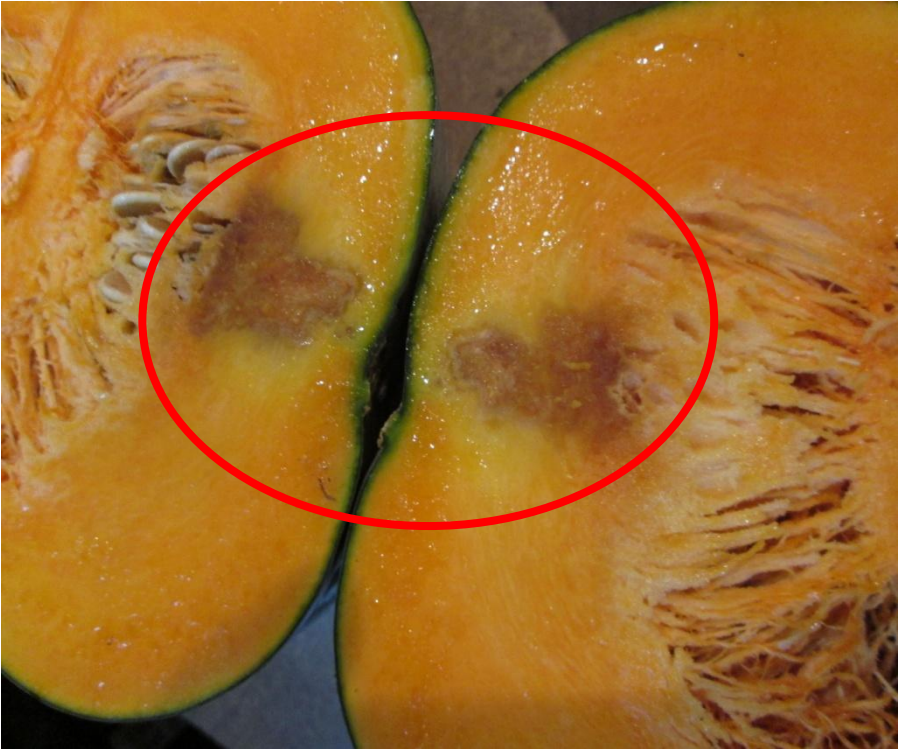
| Pumpkins | Class I | Class II | Out of Grade | Notes |
|-----------------|----------------|-----------------|---------------------|--|
| Mould Growth | x | x | √ | Mould growth (decay) not allowed for class 1 or class 2. |

Sting Mark



| Pumpkins | Class I | Class II | Out of Grade | Notes |
|-----------------|----------------|-----------------|---------------------|--|
| Injury | x | x | √ | Injury - not allowed for class 1 and class 2. Cut to determine the presence of internal tissue collapse. |

Tissue Collapse



| Pumpkins | Class I | Class II | Out of Grade | Notes |
|-----------------|----------------|-----------------|---------------------|---|
| Sting mark | x | x | √ | The presence of internal tissue collapse is not allowed for class 1 or class 2. |

Example of marking requirements

PUMPKINS

Packed by:

**1234 Enterprise
P.O. Box 100
Pampoen
0070**

PUC: D10101

Class 1

Size: 1000g – 1200g

Date: 09/12/2013

Produce of South Africa