

COLOR CHARTS PRESCRIBED FOR EXPORT SWEET POTATOES

Important note:

The below color charts should be read in conjunction with the export standards and requirements prescribed for fresh vegetables under the banner of the Agricultural Product Standards Act 119 of 1990.

Example of different variety and shapes



1



2

Sweet potatoes	Class I	Class II	Out of Grade	Notes
Variety and shape	Photo 1 Photo 2	Photo 1 Photo 2	x	All shapes allowed for both class I & class II

Blemishes



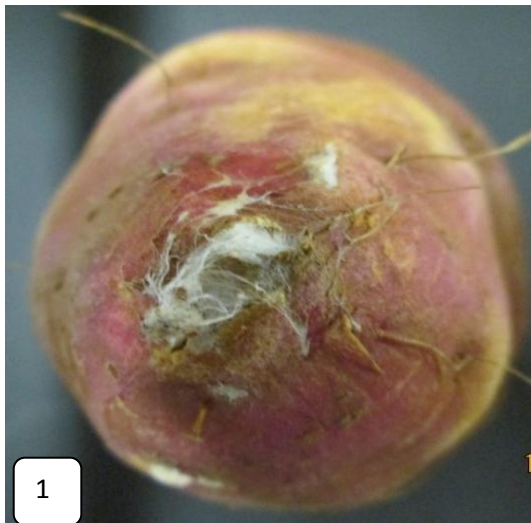
Sweet potatoes	Class I	Class II	Out of Grade	Notes
Elevated blemishes	x	x	√	Class I - be free from blemishes. Class II - be free from blemishes. Apply applicable tolerances.

Decay



Sweet potatoes	Class I	Class II	Out of Grade	Notes
Decay-smudgy	x	x	Photo 1 Photo 2	Class I & class II – Must be free from decay. Apply tolerance.

Fungus development



Sweet potatoes	Class I	Class II	Out of Grade	Notes
Fungus development	x	x	Photo 1 Photo 2	Class I & class II – Must be free from decay. Apply tolerance.

Decay-soft points

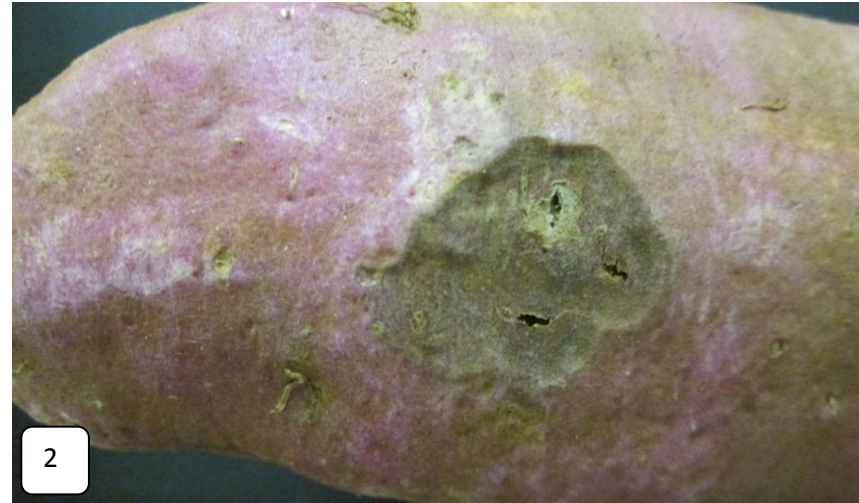


Sweet potatoes	Class I	Class II	Out of Grade	Notes
Soft points	x	x	√	Class I & class II – Must be free from decay. Apply tolerance.

Decay-sugar rot



1



2

Sweet potatoes	Class I	Class II	Out of Grade	Notes
Sugar rot	x	x	Photo 1 Photo 2	Class I & class II – Must be free from decay. Apply tolerance.

Insect damage



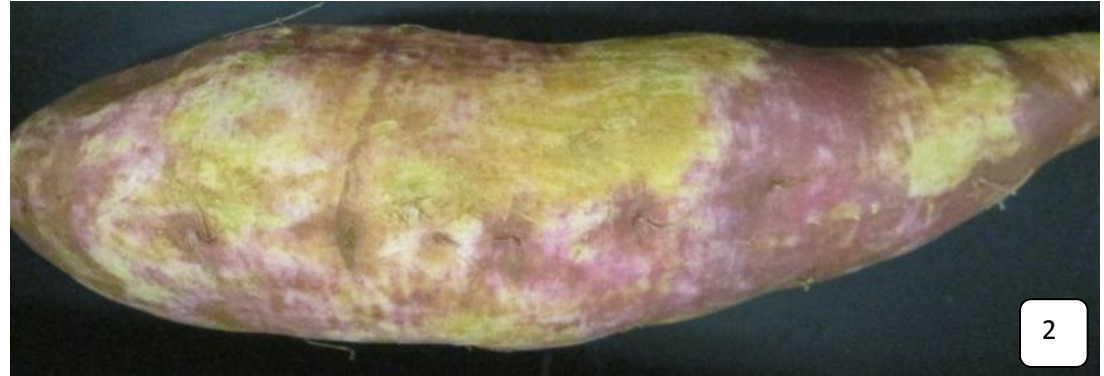
Sweet potatoes	Class I	Class II	Out of Grade	Notes
Insect damage	Photo 1	Photo 1	Photo 2	<p>Photo 1-Class I- Not more than one insect hole maximum depth and diameter of 2 mm allowed.</p> <p>Class 2-Not more than two insect holes with a maximum depth and diameter of 4 mm allowed.</p>

Mechanical damage



Sweet potatoes	Class I	Class II	Out of Grade	Notes
Mechanical damage	x	x	Photo 1 Photo 2	Class I-depth and diameter of mark must not exceed 2 mm-5% additional tolerance mass /mass allowed. Class II-depth and diameter of mark must not exceed 4 mm -5% additional tolerance mass/mass allowed.

Skin abrasion



Sweet potatoes	Class I	Class II	Out of Grade	Notes
Skin abrasion	Photo 1	Photo 1	x	Class I- be abraded on not more than 20% of the tuber area: provided that no sign of progressive development of abrasion and browning is visible. Class II- be abraded on not more than 50% of the tuber area: provided that no sign of progressive development of abrasion and browning is visible.
		Photo 2	x	

Skin abrasion with browning



Sweet potatoes	Class I	Class II	Out of Grade	Notes
Skin abrasion with browning	x	x	Photo 1 Photo 2	<p>Class I- be abraded on not more than 20% of the tuber area: provided that no sign of progressive development of abrasion and browning is visible.</p> <p>Class II- be abraded on not more than 20% of the tuber area: provided that no sign of progressive development of abrasion and browning is visible.</p>

Malformation



Sweet potatoes	Class I	Class II	Out of Grade	Notes
Malformation	Photo 1 Photo 2	Photo 1 Photo 2	x	Class 1 & class II - not show any malformation:provided that up to 10% mass/mass is permissible for class I and up to 15% mass/mass is permissible for class II.

Malformation



Sweet potatoes	Class I	Class II	Out of Grade	Notes
Malformation	Photo 1	Photo 1	x	Class 1& class II-not show any malformation:provided that up to 10% mass/mass is permissible for class I and up to 15% mass/mass is permissible for class II.
	Photo 2	Photo 2	x	

Malformation



Sweet potatoes	Class I	Class II	Out of Grade	Notes
Malformation	x	Photo 1	x	Class 1& class II-not show any malformation:provided that up to 10% mass/mass is permissible for class I and up to 15% mass/mass is permissible for class II.
	x	Photo 2	x	

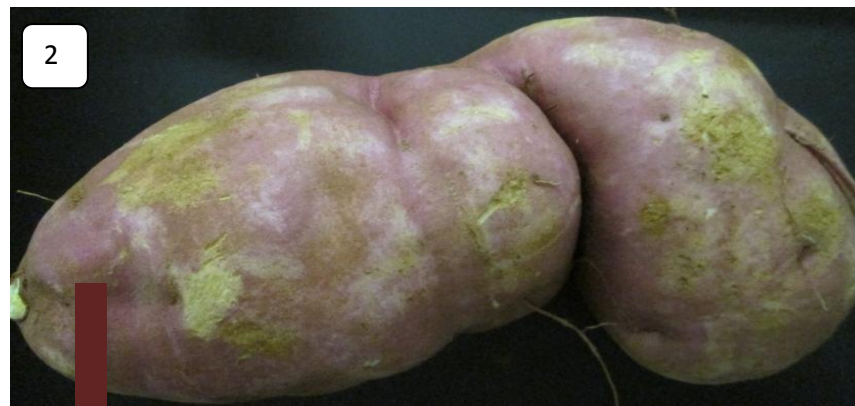
Malformation



Sweet potatoes	Class I	Class II	Out of Grade	Notes
Malformation	x	Photo 1	x	Class 1& class II-not show any malformation:provided that up to 10% mass/mass is permissible for class I and up to 15% mass/mass is permissible for class II.
	x	Photo 2	x	

Malformation

Set SP.15



Sweet potatoes	Class I	Class II	Out of Grade	Notes
Malformation	x	Photo 1	x	Class 1& class II-not show any malformation:provided that up to 10% mass/mass is permissible for class I and up to 15% mass/mass is permissible for class II.
	x	x	Photo 2	

Growth cracks



Class 1 – 1 dry growth crack with max depth of 3mm and max length of 25mm and max width of 3mm.

Class 2 – 2 dry growth cracks with a max depth of 6mm and max length of 30mm and max width of 6mm.

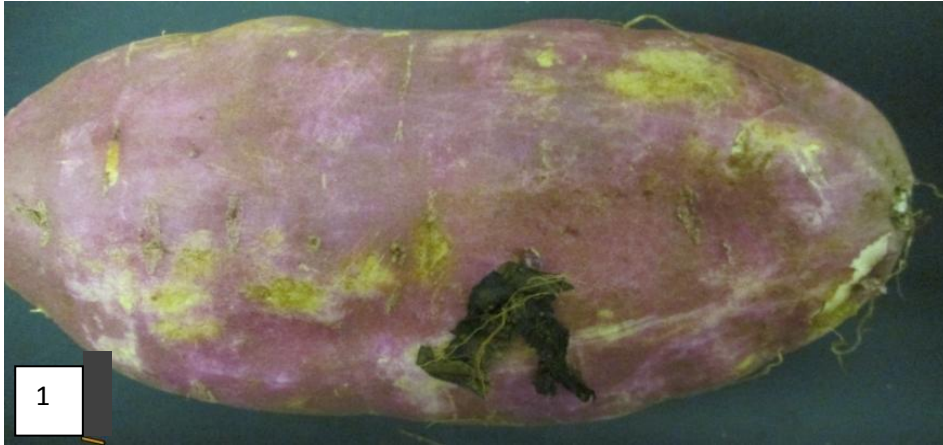
Sweet potatoes	Class I	Class II	Out of Grade	Notes
Growth cracks	x	x	Photo 1	Class I-may have one dry growth crack with a maximum depth of 3 mm, maximum length of 25 mm and maximum width of 3 mm. Class II- may have two dry growth cracks with a maximum depth of 6 mm, maximum length of 30 mm and maximum width of 6 mm.
	x	Photo 2	x	

Growth cracks



Sweet potatoes	Class I	Class II	Out of Grade	Notes
Multiple growth cracks	x	x	√	<p>Class I-may have one dry growth crack with a maximum depth of 3 mm, maximum length of 25 mm and maximum width of 3 mm.</p> <p>Class II- may have two dry growth cracks with a maximum depth of 6 mm, maximum length of 30 mm and maximum width of 6 mm.</p>

Foreign matter



1



2

Sweet potatoes	Class I	Class II	Out of Grade	Notes
Foreign matter	x	x	Photo 1 Photo 2	Class I- be clean and free from foreign matter, including soil. Apply tolerance only. Class II- be clean and free from foreign matter, including soil. Apply tolerance only.

Sprouting



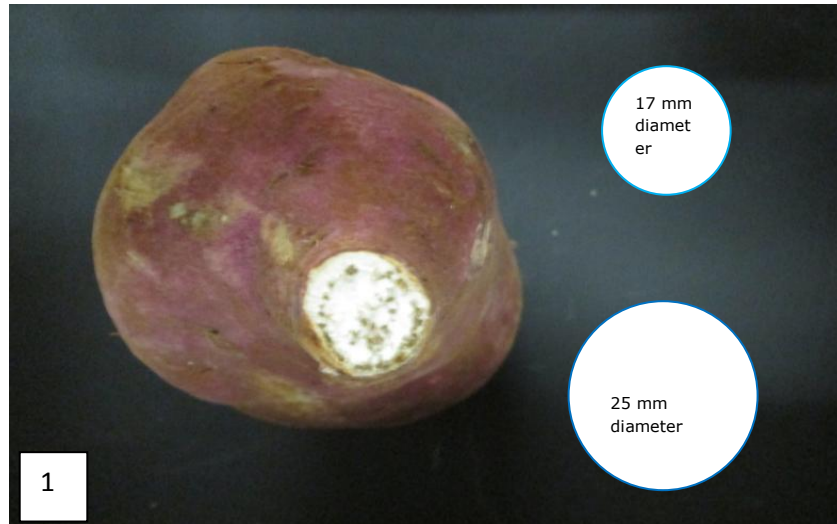
Sweet potatoes	Class I	Class II	Out of Grade	Notes
Sprouting	x	x	Photo 1 Photo 2	<p>Class I-not have sprouts. Apply tolerance only.</p> <p>Class II- may have two sprouts per tuber with a maximum length of 3 mm or three sprouts with a maximum length of 2 mm.</p>

Secondary roots



Sweet potatoes	Class I	Class II	Out of Grade	Notes
Secondary roots	x	x	Photo 1 Photo 2	Class I-not specified-not allowed. Apply tolerance only. Class II- not specified-not allowed. Apply tolerance only.

Broken tips



Sweet potatoes	Class I	Class II	Out of Grade	Notes
Sealed tips	Photo 1	Photo 1	x	Class I- have sealed broken tips with a maximum diameter of 17 mm. Class II- have sealed broken tips with a maximum diameter of 25 mm.
		Photo 2	x	

Example of marking requirements

SWEET POTATOES

Packed by:	PUC: D10111
ABC Farming	Class: 2
P.O. Box 1122	Date: 09 December 2013
Douglas	
0070	

Size: 100g – 400g

Produce of South Africa