

COLOR CHARTS PRESCRIBED FOR EXPORT BUTTERNUTS

Important note:

The below colour charts should be read in conjunction with the export standards and requirements prescribed for fresh vegetables under the banner of the Agricultural Product Standards Act 119 of 1990.

SHAPE



Defect	Class I	Class II	Out of Grade	Notes
Defect in shape for butternuts	Photo 1 Photo 2	Photo 1 Photo 2	x	<p>Should have normal characteristics of cultivar</p> <p>Photo 1: Not typical of normal shape of cultivar</p> <p>Photo 2: Acceptable for both class I and class II – the butternut is attractive in appearance and has normal cultivar characteristics</p>

SHAPE



Defect	Class I	Class II	Out of Grade	Notes
Defect in shape for butternuts	Photo 1 Photo 2	Photo 1 Photo 2	x	Should have normal characteristics of cultivar. All shapes depicted will be allowed, however class I and class II vegetables in the same container must be uniform with regard to shape.

SHAPE



Defect	Class I	Class II	Out of Grade	Notes
Defect in shape for butternuts	√	√	x	Should have normal characteristics of cultivar. The shape depicted will be allowed, however class I and class II vegetables in the same container must be uniform with regard to shape.

SHAPE



Defect	Class I	Class II	Out of Grade	Notes
Defect in shape for butternuts	x	√	x	Should have normal characteristics of cultivar Class II: May show a defect in shape provided that the butternut is not affected

BENT NECKS



1



2



3

Method of measuring

Bend necks (krom nekke): a straight line from the bulb to the neck must be visualized (use a ruler for assistance). If the neck passes the straight line it is not acceptable.

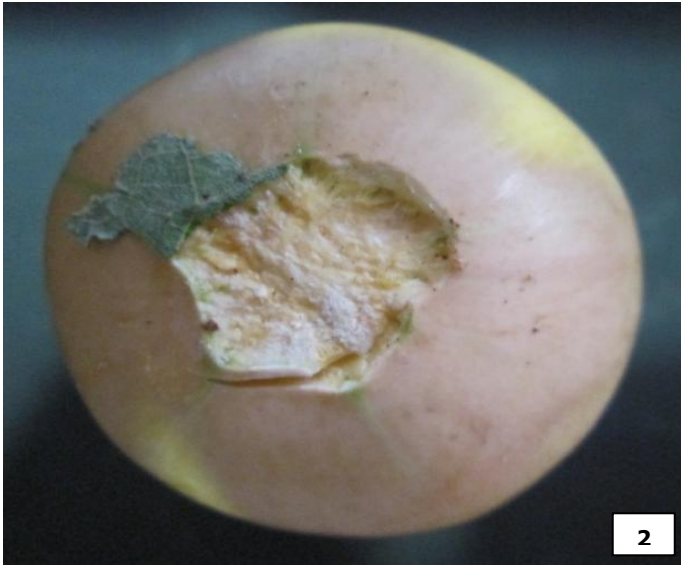
Defect	Class I	Class II	Out of Grade	Notes
Defect in shape for butternuts	Photo 3	Photo 3	Photo 1 Photo 2	<p>Bent necks - butternut should be sound and attractive and have normal characteristics of the cultivar.</p> <p>Photo 1 and 2: Does not portray normal characteristics of the cultivar.</p> <p>Photo 3: characteristics of the cultivar - maximum allowed for both class I and class II.</p>

INJURIES



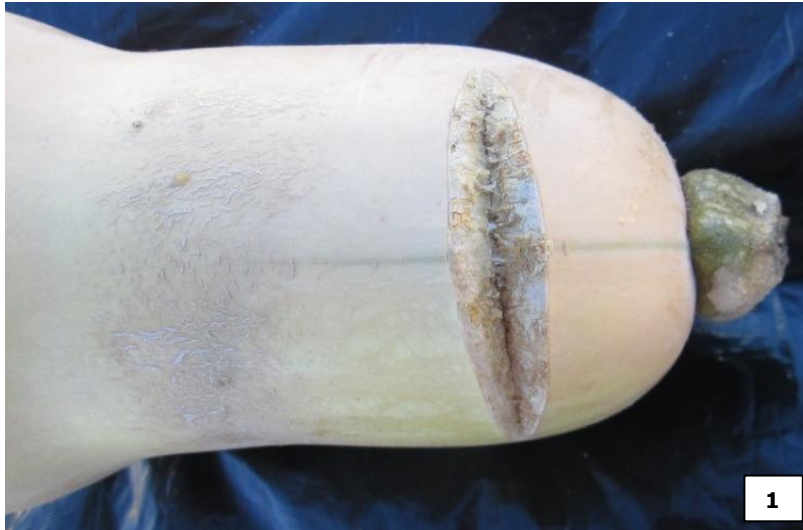
Defect	Class I	Class II	Out of Grade	Notes
Injuries	x	x	Photo 1 Photo 2	<p>Must be free from injuries.</p> <p>Photo 1: Unhealed injuries-not allowed for both class I and class II.</p> <p>Photo 2: Healed injuries-not allowed for both class I and class II. Smudgy and mould growth.</p>

INJURIES



Defect	Class I	Class II	Out of Grade	Notes
Injuries	x	x	Photo 1 Photo 2	Must be free from injuries. Photo 1: Injury not calloused - not allowed for both class I and class II. Photo 2: Torn out stem - not allowed for both class I and class II.

CRACKS



Defect	Class I	Class II	Out of Grade	Notes
Cracks	x	x	Photo 1 Photo 2	<p>Standard:</p> <p>Class I: slight cracks allowed not exceeding 12,5%.</p> <p>Class II: slight cracks allowed not exceeding 25%.</p> <p>Photo 1 and 2: Not allowed exceeds the allowable limit.</p>

BLEMISHES



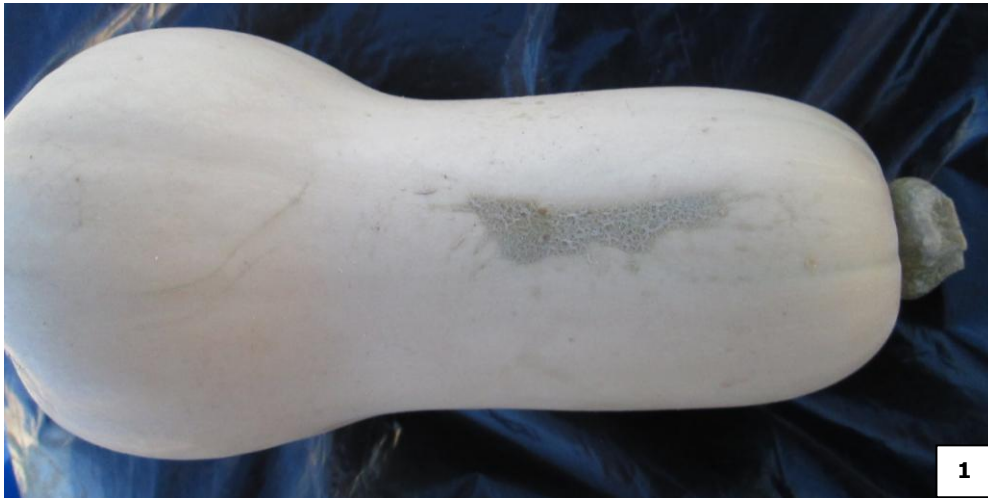
Defect	Class I	Class II	Out of Grade	Notes
Blemishes	Photo 2	Photo 2	Photo 1	<p>Standard:</p> <p>Class I: May show slight skin defects provided that the vegetable is not affected.</p> <p>Class II: May show skin defects provided that the vegetable is not affected.</p> <p>Photo 1: Elevated blemishes not allowed for both class I and class II.</p> <p>Photo 2: Blemish allowed for both class I and class II (not exceeding 10% of total surface area for class I).</p>

BLEMISHES



Defect	Class I	Class II	Out of Grade	Notes
Blemishes	Photo 2	Photo 2	Photo 1	<p>Standard:</p> <p>Class I: May show slight skin defects provided that the vegetable is not affected.</p> <p>Class II: May show skin defects provided that the vegetable is not affected.</p> <p>Photo 1: Blemish not allowed for both class I and class II (exceeding 20% of total surface area for class II).</p> <p>Photo 2: Blemish allowed for both class I and class II (not exceeding 10% of total surface area for class I).</p>

BLEMISHES



Defect	Class I	Class II	Out of Grade	Notes
Blemishes	Photo 1	Photo 1 Photo 2	x	<p>Standard:</p> <p>Class I: May show slight skin defects provided that the vegetable is not affected.</p> <p>Class II: May show skin defects provided that the vegetable is not affected.</p> <p>Photo 1: Blemish allowed for both class I and class II (not exceeding 10% of total surface area for class 1).</p> <p>Photo 2: Blemish allowed for class II (not exceeding 20% of total surface area for class II).</p>

BLEMISHES



Defect	Class I	Class II	Out of Grade	Notes
Blemishes	x	Photo 2	Photo 1	<p>Standard:</p> <p>Class I: May show slight skin defects provided that the vegetable is not affected.</p> <p>Class II: May show skin defects provided that the vegetable is not affected.</p> <p>Photo 1: Rough/elevated blemishes - not allowed for class I or class II.</p> <p>Photo 2: Blemishes/dark laid marks - a total surface area of 10% allowed for class I and 20% allowed for class II.</p>

BLEMISHES



Defect	Class I	Class II	Out of Grade	Notes
Blemishes	Photo 2	Photo 2	Photo 1	<p>Standard: Class I: May show slight skin defects provided that the vegetable is not affected. Class II: May show skin defects provided that the vegetable is not affected.</p> <p>Photo 1: Rough/elevated blemishes - not allowed for class I or class II. Photo 2: Blemishes/dark laid marks - a total surface area of 10% allowed for class I and 20% allowed for class II.</p>

BLEMISHES



Defect	Class I	Class II	Out of Grade	Notes
Blemishes	√	√	x	<p>Standard: Class I: May show slight skin defects provided that the vegetable is not affected. Class II: May show skin defects provided that the vegetable is not affected.</p> <p>Blemish allowed for both class I and class II (not exceeding 10% of total surface area for class I).</p>

COLOURING



1



2

Defect	Class I	Class II	Out of Grade	Notes
Colouring	Photo 2	Photo 2	Photo 1	<p>Standard:</p> <p>Class I: May show slight defect in colouring provided that the vegetable is not affected.</p> <p>Class II: May show defect in colouring provided that the vegetable is not affected.</p> <p>Photo 1: Colouring defect with slight crack not allowed for class I or class II.</p> <p>Photo 2: Green stripes at stem end - allowed for both class I and class II.</p>

COLOURING



Defect	Class I	Class II	Out of Grade	Notes
Colouring	√	√	x	<p>Standard:</p> <p>Class I: May show slight defect in colouring provided that the vegetable is not affected.</p> <p>Class II: May show defect in colouring provided that the vegetable is not affected.</p> <p>Cultivar characteristic thus allowed for class I and II</p>

FOREIGN MATTER



Defect	Class I	Class II	Out of Grade	Notes
Soiled butternut	x	x	√	Free from foreign matter including soil-not allowed for class I and class II.

BUTTERNUT STALK



Defect	Class I	Class II	Out of Grade	Notes
Length of the stalk	x	x	√	Stems may not be longer than 60 mm for both class I and class II.

AN EXAMPLE OF PACKING



AN EXAMPLE OF MARKING REQUIREMENTS

